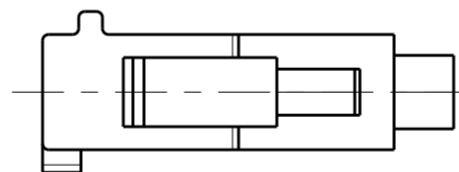
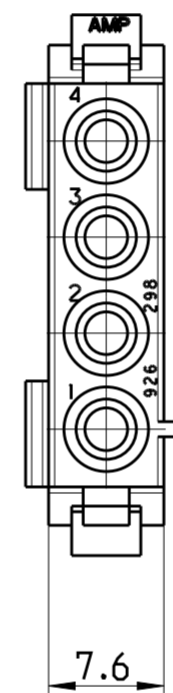
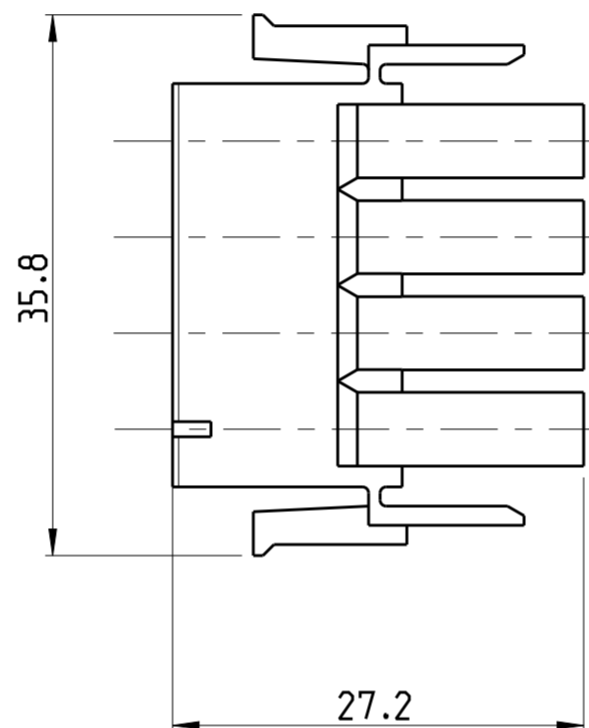
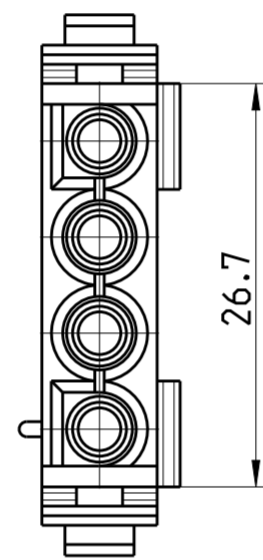


THIS DRAWING IS UNPUBLISHED. RELEASED FOR PUBLICATION 20  
 © COPYRIGHT 20 BY - ALL RIGHTS RESERVED.

LOC		DIST		REVISIONS			
P	LTR	DESCRIPTION	DATE	DWN	APVD		
F4		ECR-14-002737	24FEB2014	KKB	RRP		
F5		REVISED PER ECR-13-019169	04SEP2014	AV	DZ		

- 1 NEUES MATERIAL (PHOSPHOR UND HALOGEN FREI)
- 2 MATERIAL CORRESPONDING TO THE REQUIREMENT OF IEC60335-1 (INCL. GW T 750 °C WITHOUT FLAME)
- 3 COLOR OF HOUSINGS MAY RANGE FROM CLEAR TO GREEN OR YELLOW DUE TO HYGROSCOPIC NATURE OF RESIN.HOWEVER IT DOESN'T AFFECT THE FORM, FIT AND FUNCTION OF THE PRODUCT.



926298-7	PA66 UL94 V-0 NATURAL	2
926298-6	PA6.6 UL94 V2 NATURAL	2
926298-5	PA 6.6 UL94 V2 NATURAL	
926298-4	PA6.6 UL94 V-0 weiß	
926298-3	PA6.6 UL94 V-0 NATURAL	
926298-2	PA6.6 UL94 V-0 SCHWARZ	1
926298-1	PA66 UL94 V-2 NATURAL	3

PART NUMBER MATERIAL

THIS DRAWING IS A CONTROLLED DOCUMENT.		DWN	10FEB2014	TE Connectivity	
DIMENSIONS: mm		CHK	10FEB2014	NAME	
TOLERANCES UNLESS OTHERWISE SPECIFIED:		APVD	10FEB2014	UNIVERSAL MATE-N-LOK	
0 PLC	±	RRP		4 WAY PLUG	
1 PLC	±0.2	PRODUCT SPEC		SIZE	CAGE CODE
2 PLC	±	108-1031		A2	-
3 PLC	±	APPLICATION SPEC		DRAWING NO	RESTRICTED TO
4 PLC	±	114-18011		926298	-
ANGLES	±	WEIGHT		SCALE	SHEET
FINISH	-	CUSTOMER DRAWING		2:1	1 OF 1
MATERIAL REFER TABLE	-			REV	F5